

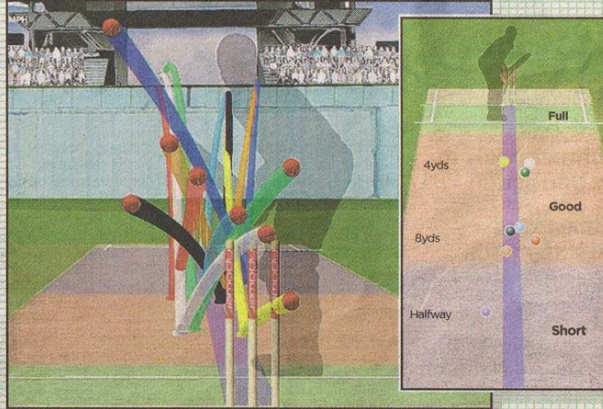
# Revealed - how to stump Australia

All is not yet lost for England whatever Australia may think after their crushing victory in the first Test. The pitches are different and so is the ball but England

can still come back if their bowlers execute the plans that were primarily responsible for their Ashes triumph last year. Here is a reminder of how Andrew

Flintoff and company undermined Australia's top three batsmen. (Clue to Duncan Fletcher - let's try it again Down Under...)

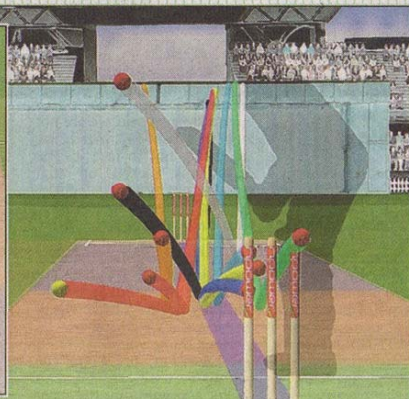
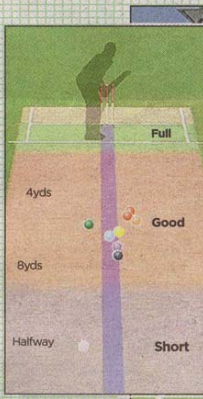
## Justin Langer



Langer is a great leaver of the ball early in his innings but also likes to have a go at anything loose so it is not a good idea to give him any width with the new ball. Once Steve Harmison had unsettled him with a blow on the arm in the first Test, England

had most success tucking him up, forcing him to play on twice, above left at Edgbaston, and get out hooking once. The graphics above show the balls that got him out and where they pitched

**PLAN: Tuck him up and go at him hard early in his innings**



## Matthew Hayden

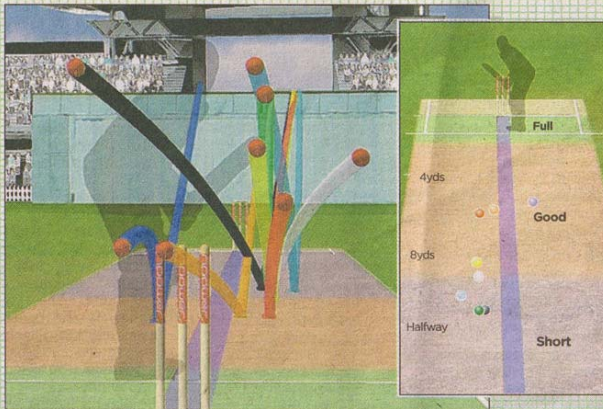


Matthew Hoggard bowled Hayden twice with the ball that swung back in to him on the blue and green trajectories, above right at Lord's, which made him all the more vulnerable to the one that

left him. Four of the five balls caught him in two minds - whether to go forward to play his booming drives or play square on the off side, where he is not as strong

**PLAN: Tease him with the length - and get the ball to swing**

## Ricky Ponting



Ricky Ponting is hailed as Australia's greatest batsman since Don Bradman but England did not have to resort to bodyline to get him out. They had considerable success bowling just short of a length to him, resulting in Ponting being caught seven times.

mostly off the edge, including the classic dismissal by Andrew Flintoff at Edgbaston, above left. Gary Pratt also ran him out but England cannot rely on their super sub this time

**PLAN: Drop the radar and bring fielders into catching positions**